

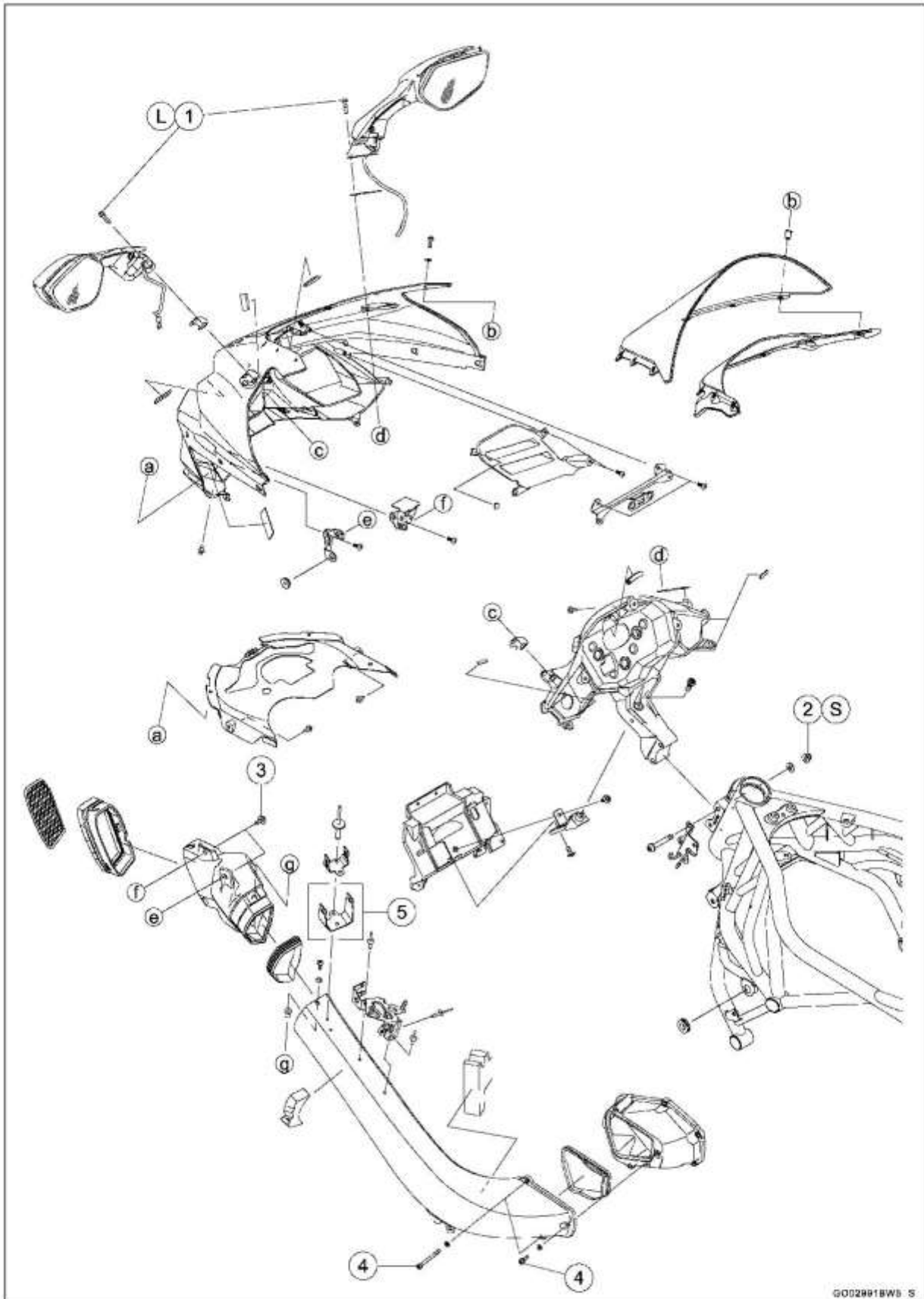
Frame

Table of Contents

Exploded View.....	15-2	Front Fender Removal.....	15-28
Special Tool.....	15-12	Front Fender Installation.....	15-28
Seat.....	15-13	Flap Removal.....	15-28
Rear Seat Removal.....	15-13	Flap Installation.....	15-29
Rear Seat Installation.....	15-13	Flap Disassembly.....	15-29
Front Seat Removal.....	15-13	Flap Assembly.....	15-30
Front Seat Installation.....	15-13	Rear Fender Removal.....	15-30
Fairings.....	15-14	Rear Fender Installation.....	15-31
Lower Inner Fairing Removal.....	15-14	Frame.....	15-32
Lower Inner Fairing Installation....	15-14	Frame Inspection.....	15-32
Lower Fairing Removal.....	15-14	Rear Frame Removal.....	15-32
Lower Fairing Installation.....	15-16	Rear Frame Installation.....	15-33
Lower Fairing Disassembly.....	15-16	Windshield.....	15-34
Lower Fairing Assembly.....	15-17	Windshield Removal.....	15-34
Upper Inner Fairing Removal.....	15-18	Windshield Installation.....	15-34
Upper Inner Fairing Installation....	15-18	Guard.....	15-35
Upper Fairing Removal.....	15-18	Mud Guard Removal.....	15-35
Upper Fairing Installation.....	15-20	Mud Guard Installation.....	15-35
Upper Fairing Disassembly.....	15-20	Rear Sprocket Guard Removal....	15-36
Upper Fairing Assembly.....	15-21	Rear Sprocket Guard Installation.	15-36
Intake Duct Removal.....	15-23	Side Stand, Center Stand.....	15-37
Intake Duct Installation.....	15-25	Side Stand Removal.....	15-37
Side Covers.....	15-26	Side Stand Installation.....	15-38
Fuel Tank Cover Removal.....	15-26	Center Stand Removal.....	15-39
Fuel Tank Cover Installation.....	15-26	Center Stand Installation.....	15-40
Seat Covers.....	15-27	Rear View Mirrors.....	15-42
Seat Cover Removal.....	15-27	Rear View Mirror Removal.....	15-42
Seat Cover Installation.....	15-27	Rear View Mirror Installation.....	15-42
Fenders.....	15-28		

15-2 FRAME

Exploded View



Exploded View

No.	Fastener	Torque			Remarks
		N·m	kgf·m	ft·lb	
1	Rear View Mirror Mounting Bolts	8.0	0.82	71 in·lb	L
2	Upper Fairing Bracket Nuts	30	3.1	22	S*
3	Front Intake Duct Bolts	5.0	0.51	44 in·lb	
4	Rear Intake Duct Bolts	6.0	0.61	53 in·lb	

5. Immobilizer Equipped Models

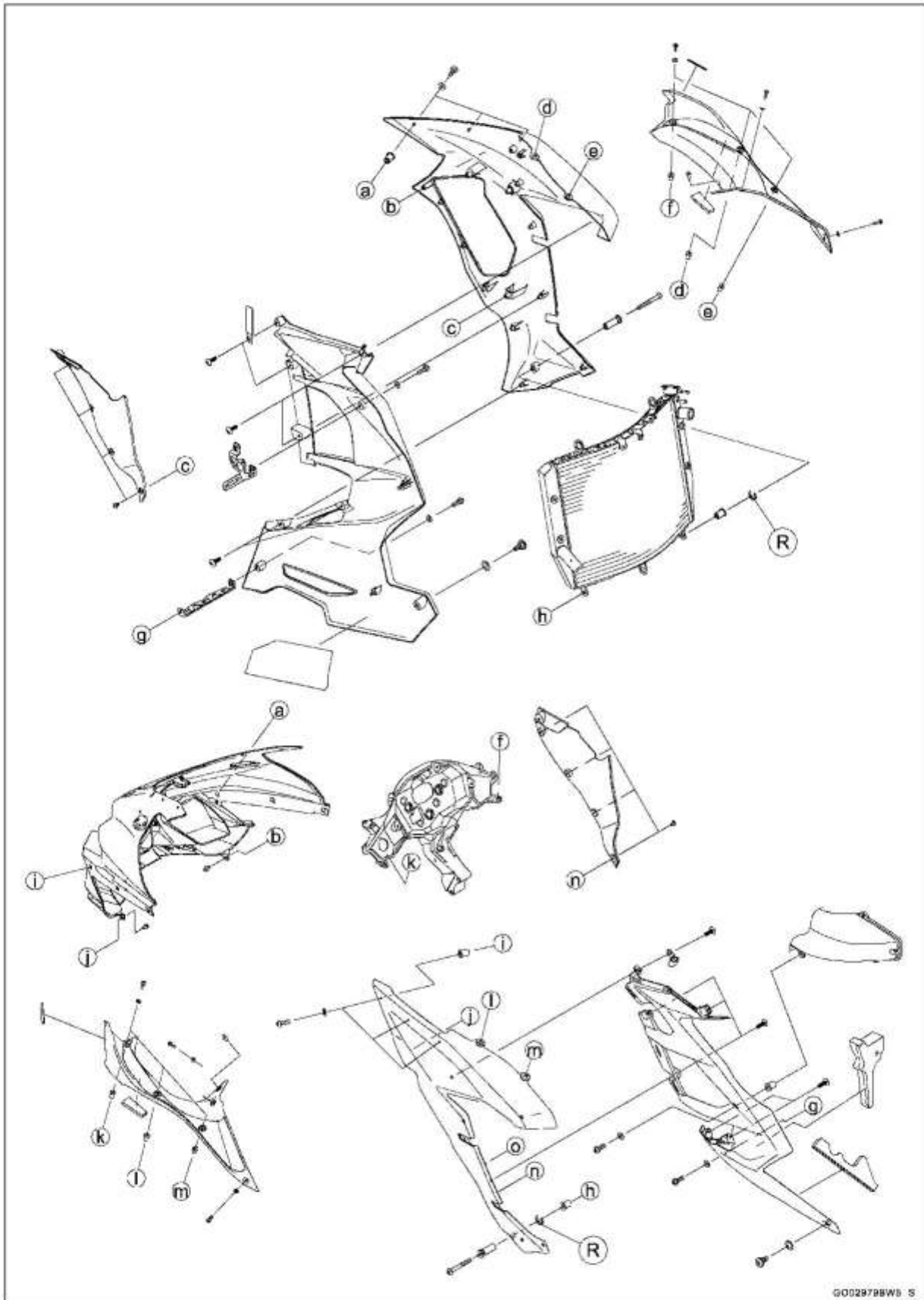
L: Apply a non-permanent locking agent.

S: Follow the specified tightening sequence.

*: Tighten the lower bolt first.

15-4 FRAME

Exploded View

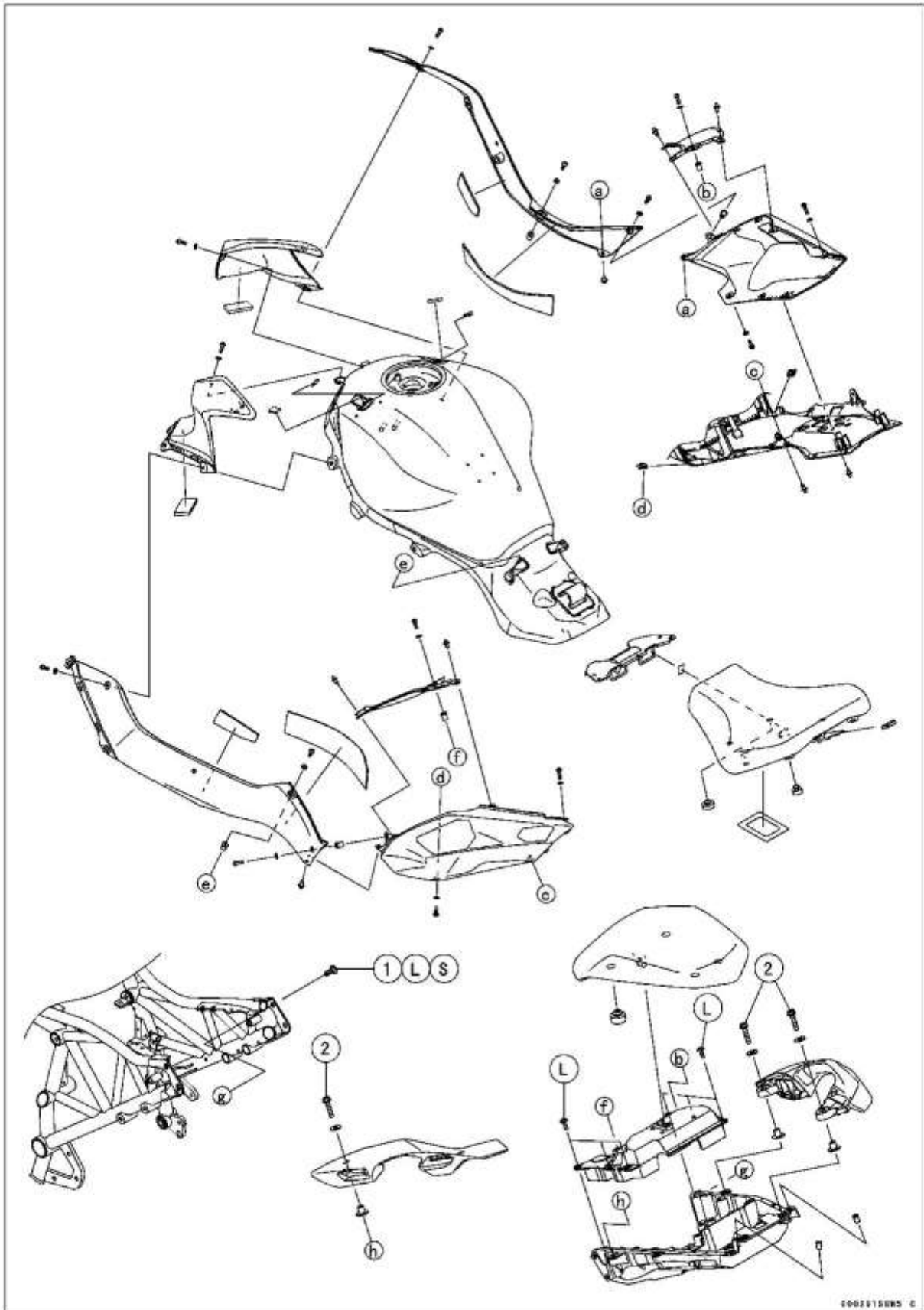


Exploded View

R: Replacement Parts

15-6 FRAME

Exploded View



Exploded View

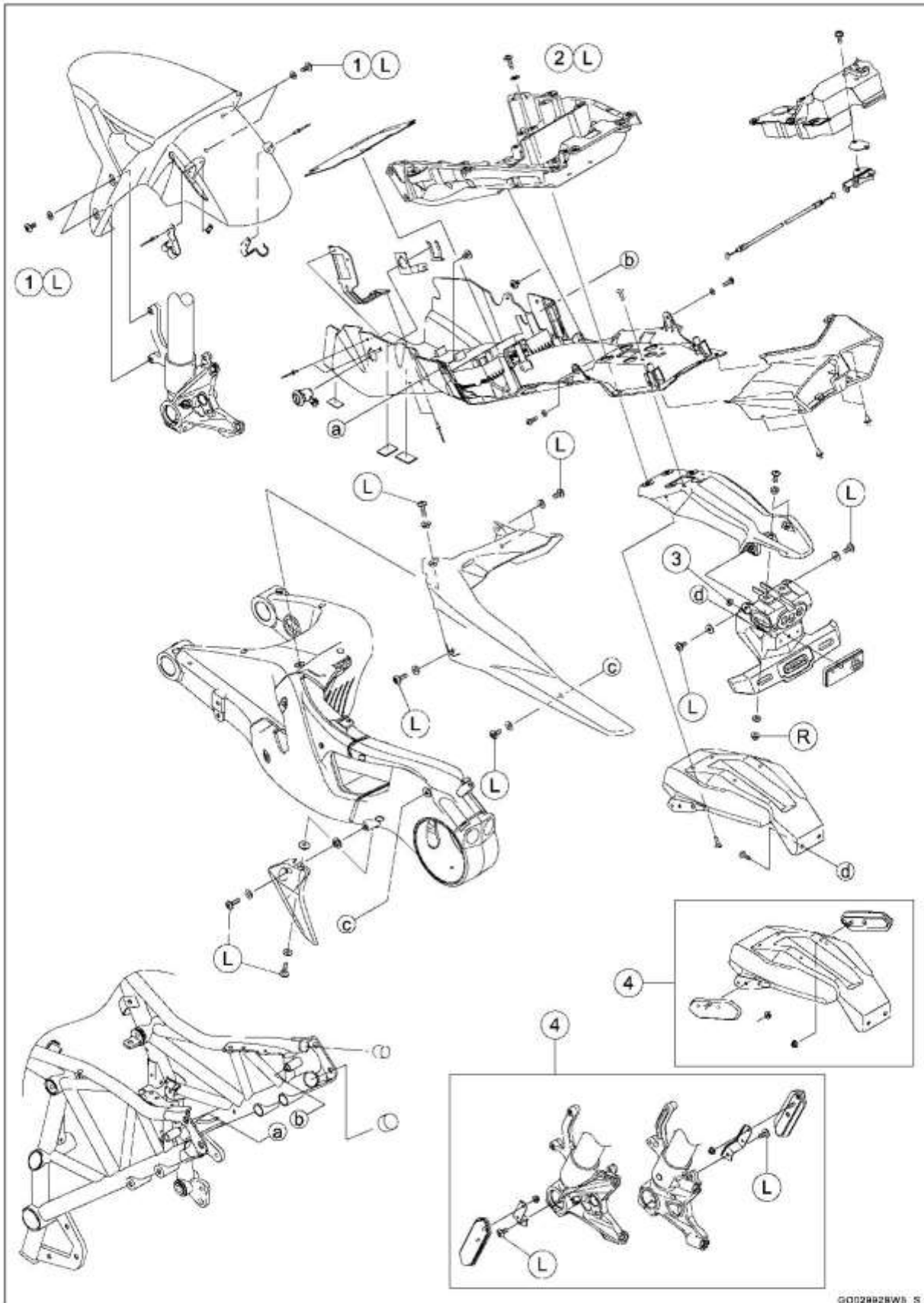
No.	Fastener	Torque			Remarks
		N·m	kgf·m	ft·lb	
1	Rear Frame Bolts	27	2.8	20	L, S
2	Grab Rail Mounting Bolts	20	2.0	15	

L: Apply a non-permanent locking agent.

S: Follow the specified tightening sequence.

15-8 FRAME

Exploded View



Exploded View

No.	Fastener	Torque			Remarks
		N·m	kgf·m	ft·lb	
1	Front Fender Mounting Bolts	4.0	0.41	35 in·lb	L
2	Flap Mounting Bolts	7.0	0.71	62 in·lb	L
3	Reflector Nut	3.4	0.35	30 in·lb	

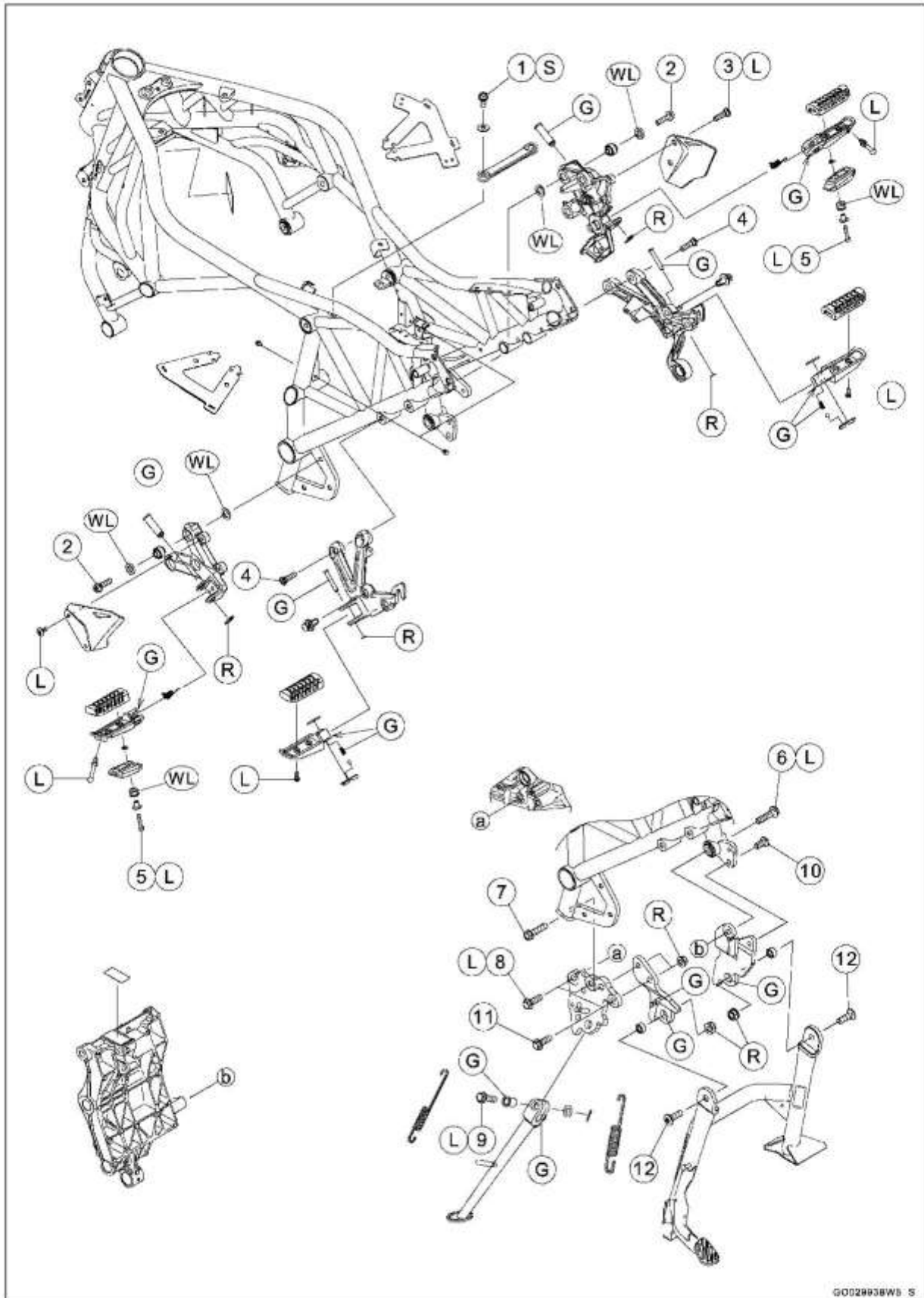
4. Equipped Models

L: Apply a non-permanent locking agent.

R: Replacement Parts

15-10 FRAME

Exploded View



Exploded View

No.	Fastener	Torque			Remarks
		N·m	kgf·m	ft·lb	
1	Frame Bracket Bolts	25	2.5	18	S*
2	Front Footpeg Bracket Bolts	25	2.5	18	
3	Rear Master Cylinder Mounting Bolts	25	2.5	18	L
4	Rear Footpeg Bracket Bolts	25	2.5	18	
5	Front Footpeg Bolts	4.5	0.46	40 in·lb	L
6	Swingarm Mounting Plate Bolt (Lower)	45	4.6	33	L
7	Side Stand Bracket Bolt (Rear)	50	5.1	37	
8	Side Stand Bracket Bolts	50	5.1	37	L
9	Side Stand Bolt	30	3.1	22	L
10	Center Stand Bracket Bolt (L = 20 mm)	50	5.1	37	
11	Center Stand Bracket Bolt (L = 30 mm)	50	5.1	37	L
12	Center Stand Bolts	45	4.6	33	

G: Apply grease.

L: Apply a non-permanent locking agent.

R: Replacement Parts

S: Follow the specified tightening sequence.

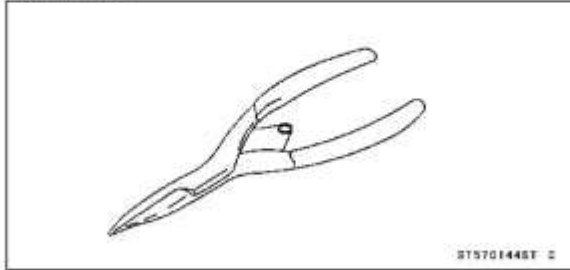
WL: Apply soap and water solution or rubber lubricant.

*: Tighten the left bolt first.

15-12 FRAME

Special Tool

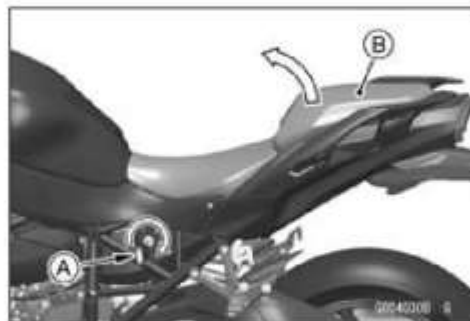
Outside Circlip Pliers:
57001-144



Seat

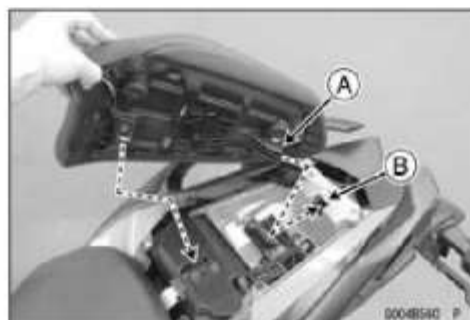
Rear Seat Removal

- Insert the ignition switch key [A] into the seat lock.
- Turn the key clockwise, and pull up the front part of the rear seat [B].
- Remove the rear seat.



Rear Seat Installation

- Insert the seat hook [A] into the frame hole [B].
- Push down the front part of the seat until the lock clicks.



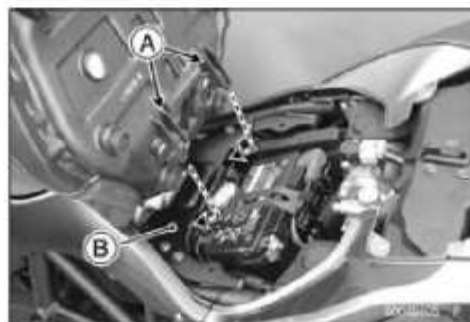
Front Seat Removal

- Remove the rear seat (see [Rear Seat Removal\(15-13\)](#)).
- Pull up the rear part of the front seat [A].
- Remove the front seat.

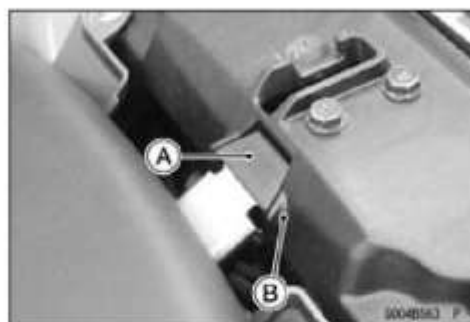


Front Seat Installation

- Insert the seat hooks [A] under the fuel tank bracket [B].



- Position the damper [A] to the bracket [B].

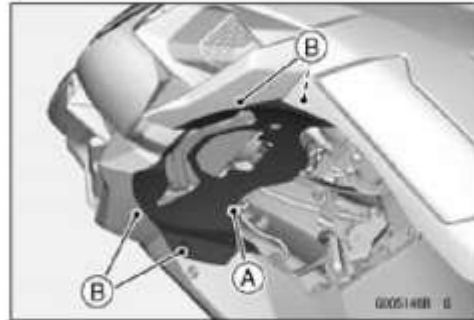


15-14 FRAME

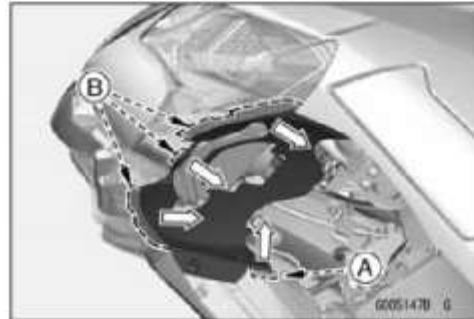
Fairings

Lower Inner Fairing Removal

- Open the clamp [A].
- Remove:
Quick Rivets [B]



- Pull the both sides of the lower inner fairing upward to clear the tab [A].
- Pull the front part of the lower inner fairing rearward to clear the tabs [B].
- Remove the lower inner fairing.



Lower Inner Fairing Installation

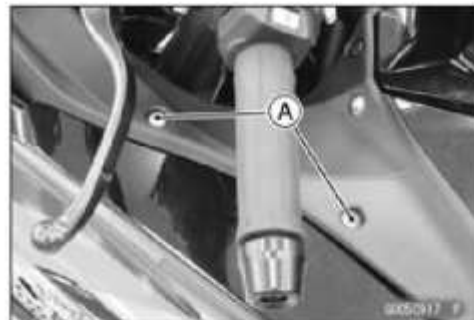
- Installation is the reverse of removal.
- Run the leads, hoses and cables correctly (see Cable, Wire, and Hose Routing section (18-2)).

Lower Fairing Removal

- Remove:
Lower Inner Fairing (see Lower Inner Fairing Removal(15-14))
Quick Rivet [A]

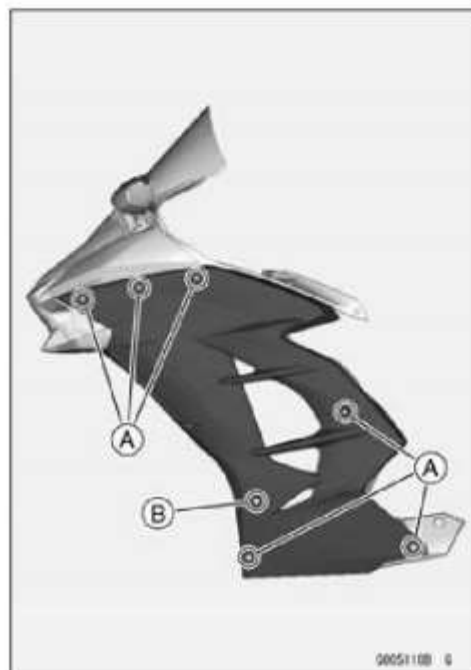


- Remove:
Bolts [A] and Washers

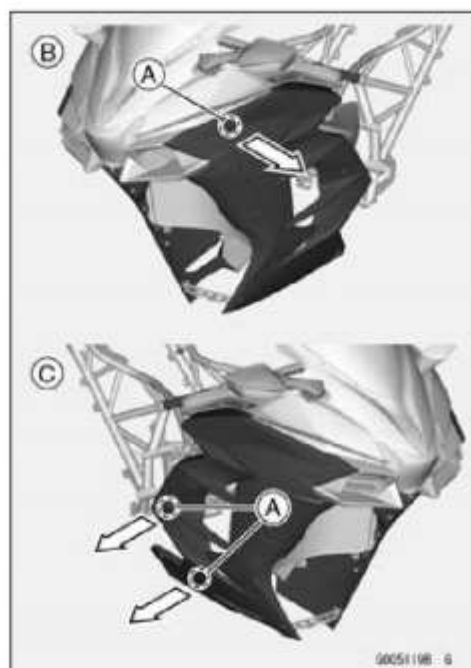


Fairings

- Remove:
Bolts [A] and Washers
Bolt [B]



- Pull the lower fairing outward to clear the projections [A].
Left Side [B]
Right Side [C]



- Disconnect the cornering light lead connectors [A].
- Remove the lower fairing.

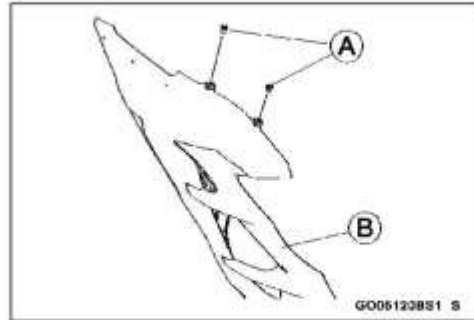


15-16 FRAME

Fairings

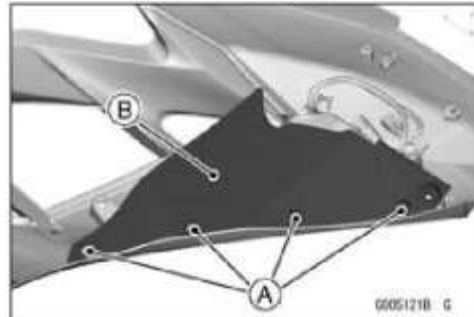
Lower Fairing Installation

- Be sure to install the wellnut [A].
 - Install:
 - Lower Fairing [B]
- Installation is the reverse of removal.



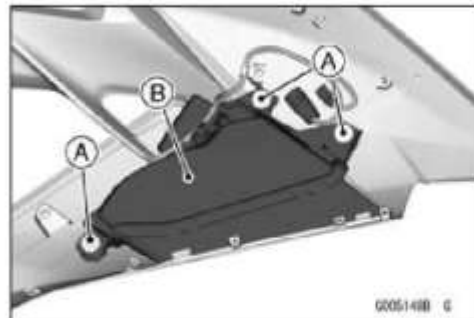
Lower Fairing Disassembly

- Remove:
 - Lower Fairing (see Lower Fairing Removal(15-14))
 - Screws [A]
 - Inner Cover [B]



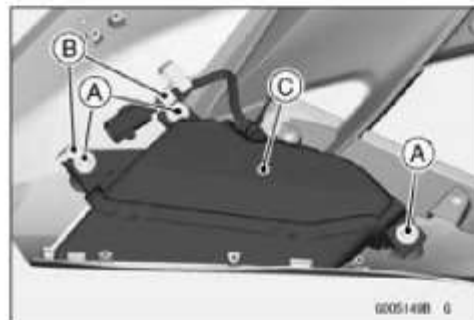
Left Side

- Remove:
 - Screws [A] and Washers
 - Cornering Light [B]



Right Side

- Remove:
 - Screws [A] and Washers
 - Clamps [B]
 - Cornering Light [C]



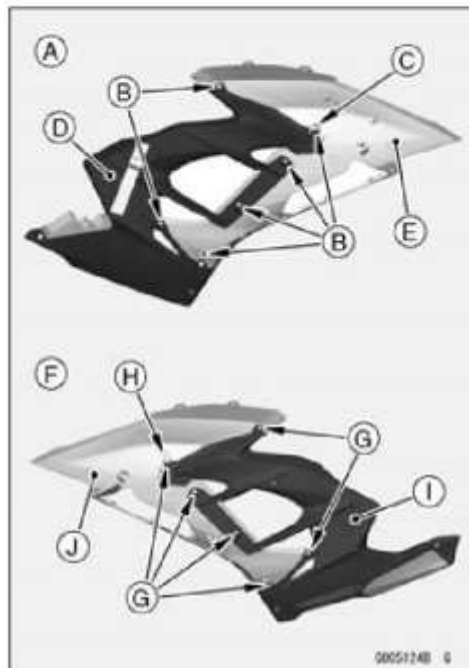
Fairings

Left Side [A]

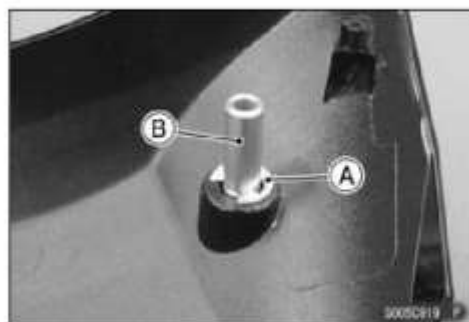
- Remove:
 - Screws [B]
 - Clamp [C]
 - Lower Fairing (Rear) [D]
 - Lower Fairing (Front) [E]

Right Side [F]

- Remove:
 - Screws [G]
 - Clamp [H]
 - Lower Fairing (Rear) [I]
 - Lower Fairing (Front) [J]

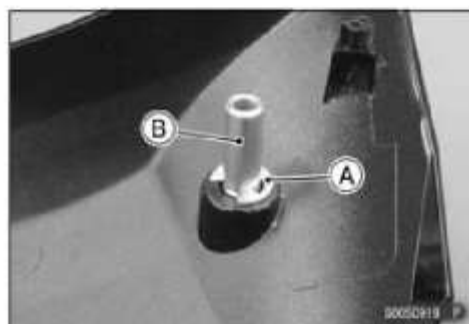


- Remove:
 - Circlip [A]
 - Collar [B]
- Special Tool - Outside Circlip Pliers: 57001-144**



Lower Fairing Assembly

- Replace the circlip [A] with a new one.
 - Install:
 - Collar [B]
 - Circlip
- Special Tool - Outside Circlip Pliers: 57001-144**



15-18 FRAME

Fairings

- Install:
 - Lower Fairing (Front) [A]
 - Lower Fairing (Rear) [B]
 - Cornering Light [C]
 - Inner Cover [D]

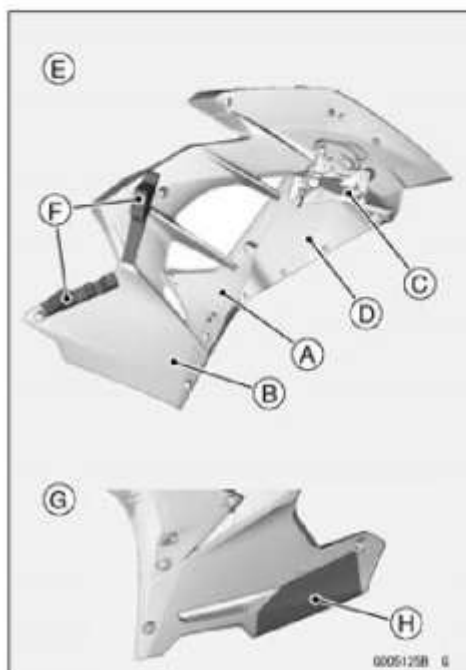
○Assembly is the reverse of disassembly.

Left Side [E]

- Install the pads [F] as shown.

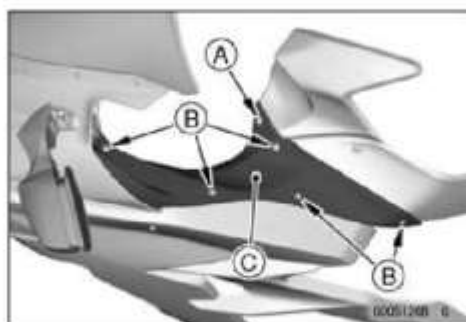
Right Side [G]

- Install the pads [H] as shown.



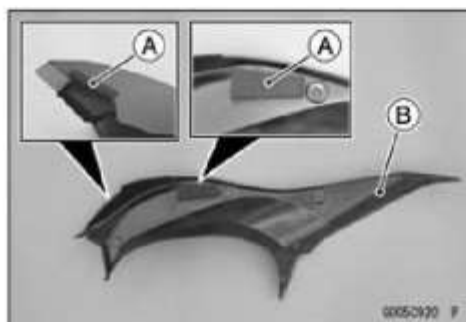
Upper Inner Fairing Removal

- Remove:
 - Quick Rivet [A]
 - Bolts [B] and Washers
 - Upper Inner Fairing [C]



Upper Inner Fairing Installation

- Be sure to install the pads [A] as shown.
 - Install:
 - Upper Inner Fairing [B]
- Installation is the reverse of removal.



Upper Fairing Removal

WARNING

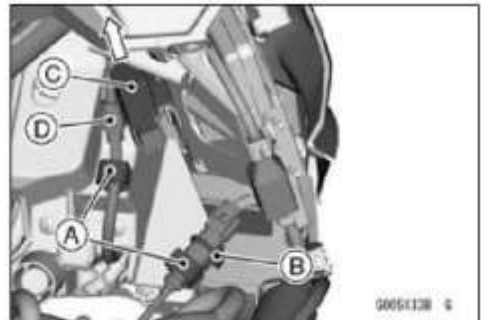
The cooling fins at the rear of headlight become hot during normal operation and can cause serious burns. To prevent burns, never touch the cooling fins at the rear of headlight while the engine is running or shortly after it has been stopped.

Fairings

- Remove:
 - Lower Fairings (see [Lower Fairing Removal\(15-14\)](#))
 - Upper Inner Fairings (see [Upper Inner Fairing Removal\(15-18\)](#))
 - Rear View Mirrors (see [Rear View Mirror Removal\(15-42\)](#))
- (Equipped Models) Disconnect the grip heater controller connector [A].
- Remove:
 - Bolt [B] and Washer
- Cut the band [C].



- Open the clamps [A].
- Cut the band [B].
- Take the relay [C] off the bracket.
- Disconnect the right city light lead connector [D].



- Remove:
 - Bolt [A]



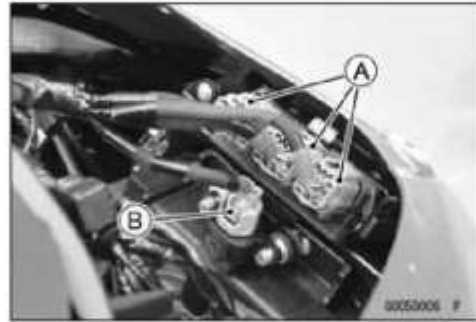
- Pull the upper fairing upward to clear the holes [A] from the mirror mounting portions.



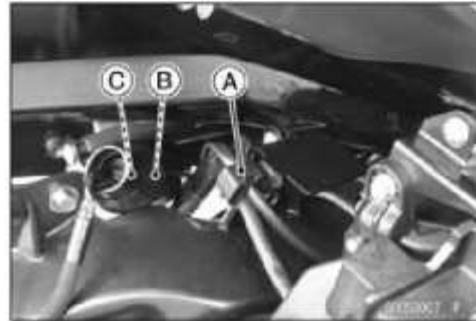
15-20 FRAME

Fairings

- Disconnect:
 - Relay Box Connectors [A]
 - Vehicle-down Sensor Connector [B]



- Open the clamp [A].
- Disconnect:
 - Headlight Lead Connector [B]
 - Left City Light Lead Connector [C]
- Remove:
 - Upper Fairing



Upper Fairing Installation

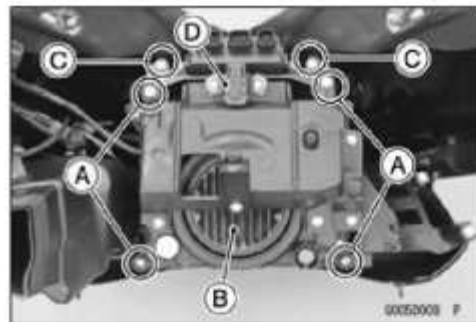
- Installation is the reverse of removal.
- Run the cables, leads and hoses correctly (see Cable, Wire, and Hose Routing section (18-2)).

Upper Fairing Disassembly

⚠ WARNING

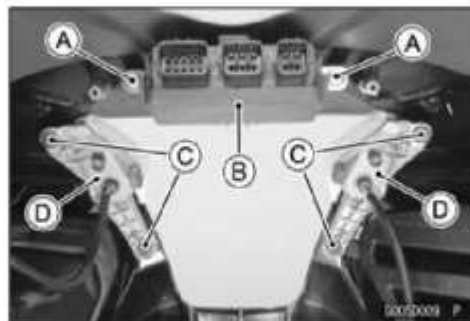
The cooling fins at the rear of headlight become hot during normal operation and can cause serious burns. To prevent burns, never touch the cooling fins at the rear of headlight while the engine is running or shortly after it has been stopped.

- Remove:
 - Upper Fairing (see Upper Fairing Removal(15-18))
 - Headlight Screws [A]
 - Headlight Unit [B]
 - Screws [C]
 - Vehicle-down Sensor [D] with Bracket



Fairings

- Remove:
 - Screws [A]
 - Relay Box [B]
 - Screws [C]
 - City Lights [D]



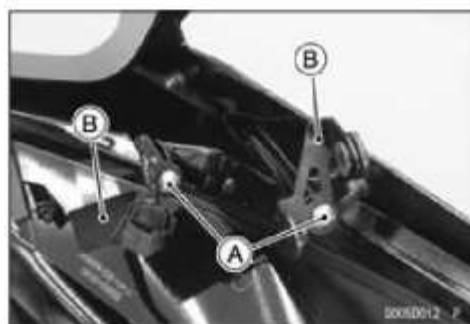
- Remove:
 - Screws [A]
 - Cover [B]



- Remove:
 - Front Intake Duct Bolts [A]
 - Front Intake Duct [B]

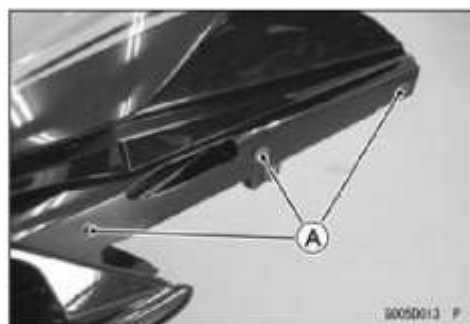


- Remove:
 - Screws [A]
 - Brackets [B]



Upper Fairing Assembly

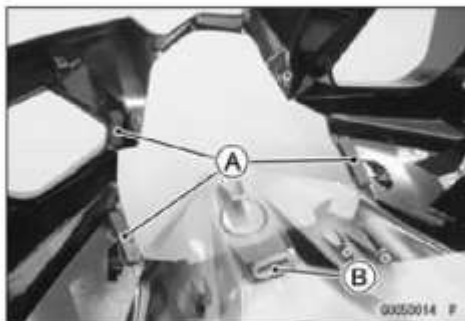
- Be sure to install the wellnuts [A] on both sides.



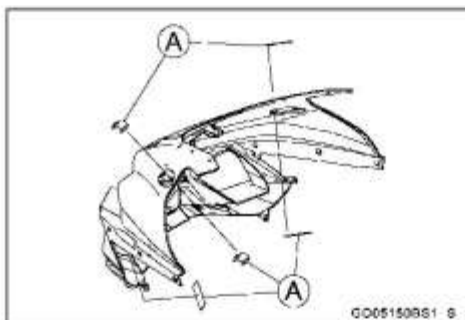
15-22 FRAME

Fairings

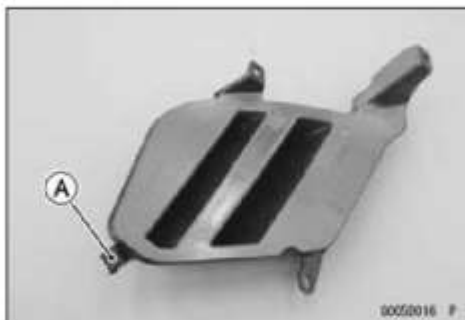
- Be sure to install the pads [A] and grommet [B].



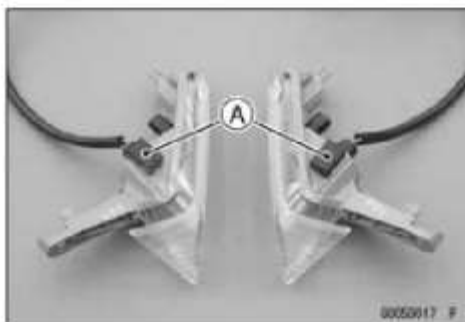
- Be sure to install the pads [A].



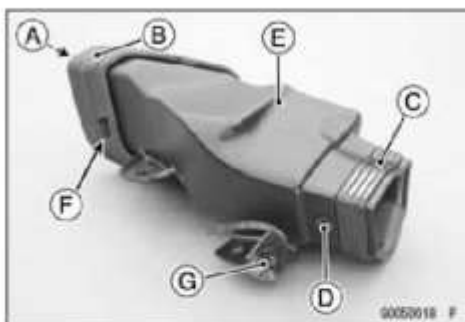
- Be sure to install the pad [A] on the cover.



- Be sure to install the pads [A] on the city lights.



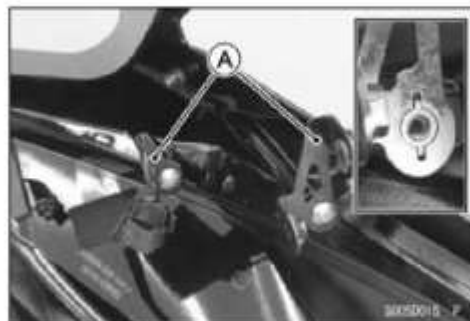
- When assembling the front intake duct, note the followings.
 - Install the screen [A], screen cover [B], seal [C] and well-nut [D] to the front intake duct [E].
 - Fit the holes on the screen cover to the hooks [F] of the front intake duct.
 - Replace the band [G] if necessary.



Fairings

- Assembly is the reverse of disassembly. Note the followings.
- When installing the brackets [A] to the left side of the upper fairing, fit the ribs and slots as shown.
- When installing the front intake duct, tighten the bolts to the specified torque.

Torque - Front Intake Duct Bolts: 5.0 N·m (0.51 kgf·m, 44 in·lb)



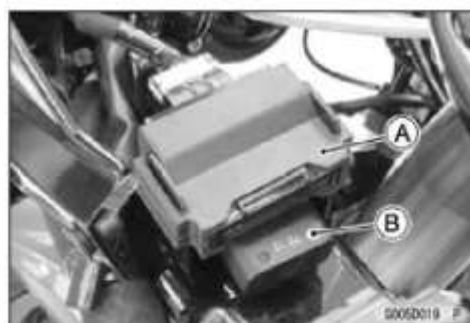
Intake Duct Removal

Front Intake Duct

- Refer to the Upper Fairing Disassembly (see [Upper Fairing Disassembly\(15-20\)](#)).

Rear Intake Duct

- Remove:
 - Left Lower Fairing (see [Lower Fairing Removal\(15-14\)](#))
 - Left Upper Inner Fairing (see [Upper Inner Fairing Removal\(15-18\)](#))
- Take the following parts off the bracket of the rear intake duct.
 - Immobilizer Amplifier [A] (Equipped Models)
 - Grip Heater Controller [B] (Equipped Models)



- Remove:
 - Bolt [A] and Washer



- Take the connector [A] off the bracket of the rear intake duct.
- Remove:
 - Frame Ground Terminal Bolt [B]
- Cut the band [C].
- Disconnect:
 - Regulator/Rectifier Connectors [D]



15-24 FRAME

Fairings

- Remove:
 - Rear Intake Duct Bolts [A] and Washers
- Pull the rear intake duct rearward to remove it from the front intake duct.



Fairings

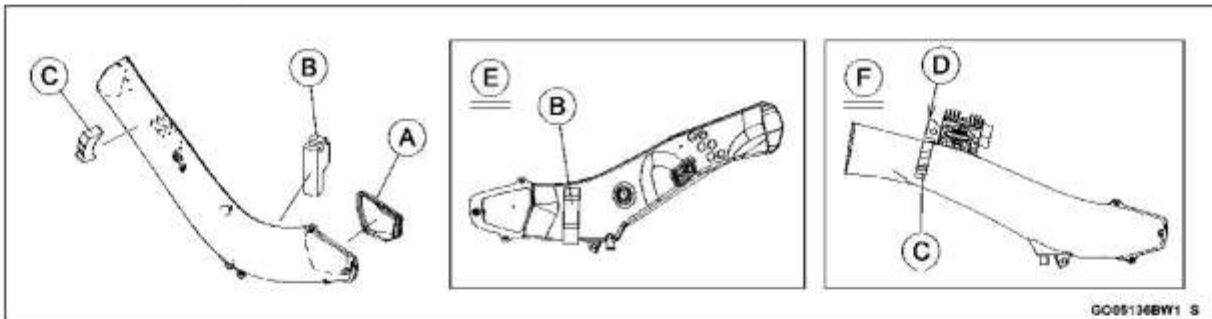
Intake Duct Installation

Front Intake Duct

- Refer to the Upper Fairing Assembly (see Upper Fairing Assembly(15-21)).

Rear Intake Duct

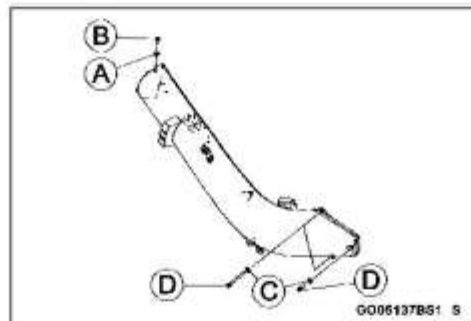
- Be sure to install the seal [A].
- When installing the pads [B] [C], position them as shown.
- Align the front edge of the pad [C] with the front edge [D] of the regulator/rectifier bracket.
- Inside of Duct [E]
- Outside of Duct [F]



- Insert the rear intake duct to the front intake duct.
- Insert the ribs [A] of the rear intake duct to the heat insulation plate [B].



- Install the washer [A] and tighten the bolt [B].
- Install the washers [C].
- Tighten:
Torque - Rear Intake Duct Bolts [D]: 6.0 N·m (0.61 kgf·m, 53 in·lb)

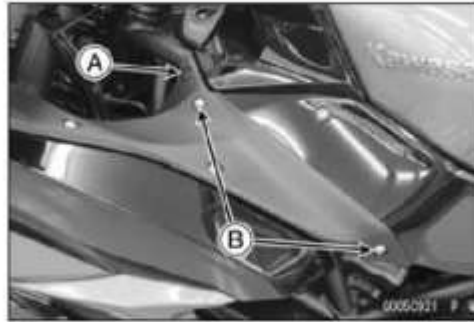


15-26 FRAME

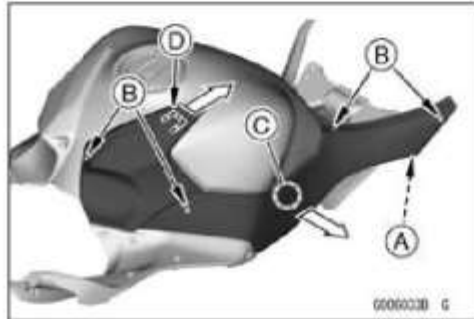
Side Covers

Fuel Tank Cover Removal

- Remove:
 - Front Seat (see [Front Seat Removal\(15-13\)](#))
 - Quick Rivet [A]
 - Bolts [B] and Washers

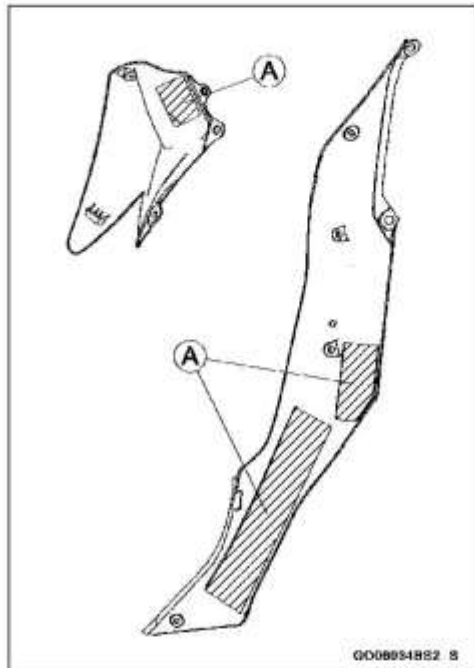


- Remove:
 - Quick Rivet [A]
 - Bolts [B] and Washers
- Clear the projection [C] of the lower fuel tank cover from the grommet.
- Clear the upper fuel tank cover from the hook [D] of the fuel tank.
- Remove the upper and lower fuel tank covers.

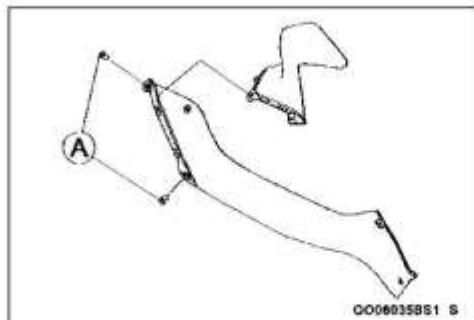


Fuel Tank Cover Installation

- Check that the pads [A] are in place on the fuel tank covers.



- Install the wellnuts [A].

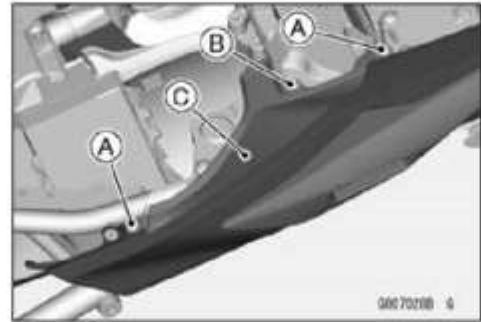


- Install the upper and lower fuel tank covers.
 - Installation is the reverse of removal.

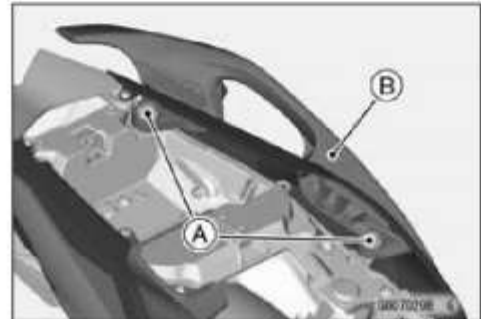
Seat Covers

Seat Cover Removal

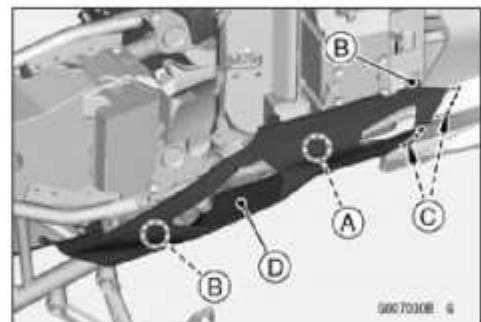
- Remove:
 - Fuel Tank Cover (see Fuel Tank Cover Removal(15-26))
 - Quick Rivets [A]
 - Bolt [B] and Washer
 - Seat Sub Cover [C]



- Remove:
 - Grab Rail Mounting Bolts [A] and Washers
 - Grab Rail [B] and Collars

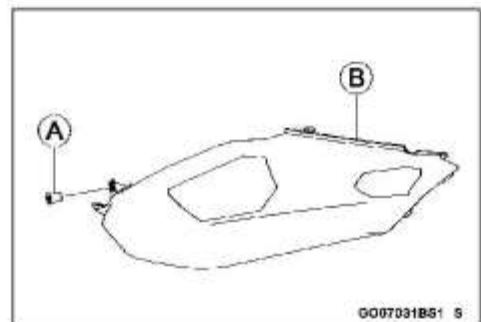


- Remove:
 - Quick Rivet [A]
 - Bolts [B] and Washers
- Clear the tabs [C] from the tail cover.
- Remove the seat cover [D].

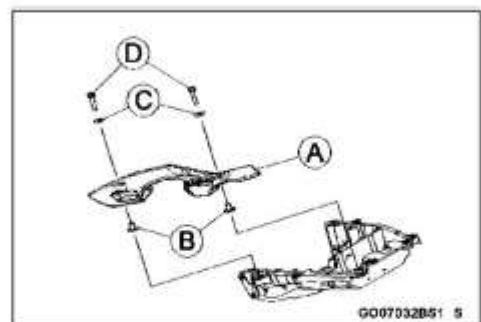


Seat Cover Installation

- Be sure to install the wellnut [A].
- Install:
 - Seat Cover [B]
- Installation is the reverse of removal.



- Install:
 - Grab Rail [A]
 - Collars [B]
 - Washers [C]
- Tighten:
 - Torque - Grab Rail Mounting Bolts [D]: 20 N·m (2.0 kgf·m, 15 ft·lb)



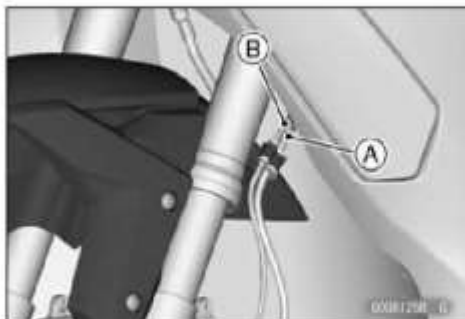
- Install:
 - Seat Sub Cover
- Installation is the reverse of removal.
- Install the removed parts.

15-28 FRAME

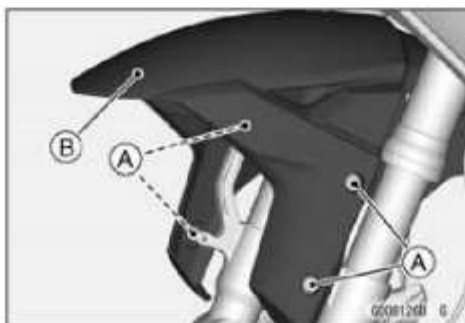
Fenders

Front Fender Removal

- Remove:
 - Front Wheel (see [Front Wheel Removal\(10-6\)](#))
- Free the brake hose [A] from the clamp on both sides.
- Free the front wheel rotation sensor lead [B] from the clamp.



- Remove:
 - Reflectors (Equipped Models)
 - Front Fender Mounting Bolts [A] and Washers
 - Front Fender [B]

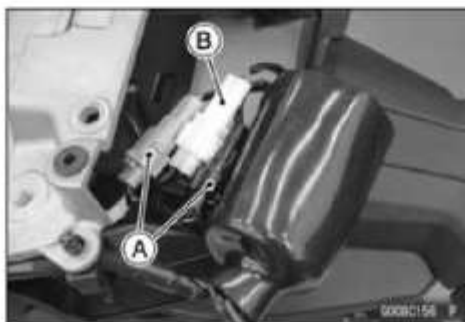


Front Fender Installation

- Installation is the reverse of removal.
- Apply a non-permanent locking agent to the front fender mounting bolts.
- Tighten:
 - Torque - Front Fender Mounting Bolts: 4.0 N·m (0.41 kgf·m, 35 in·lb)**
- Run the leads and hoses correctly (see [Cable, Wire, and Hose Routing section \(18-2\)](#)).

Flap Removal

- Remove:
 - Brake/Tail Light (see [Brake/Tail Light \(LED\) Removal\(16-57\)](#))
- Disconnect:
 - Rear Turn Signal Light Lead Connectors [A]
 - License Plate Light Lead Connector [B]

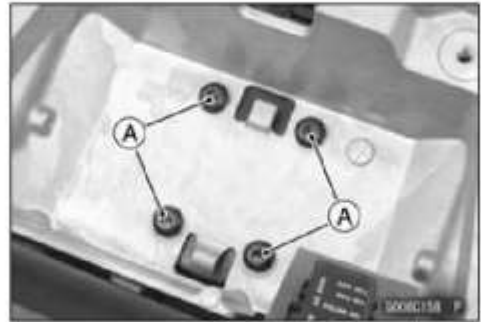


- Remove:
 - Bolt [A] and Washer (Both Sides)



Fenders

- Remove:
Flap Mounting Bolts [A] and Washers

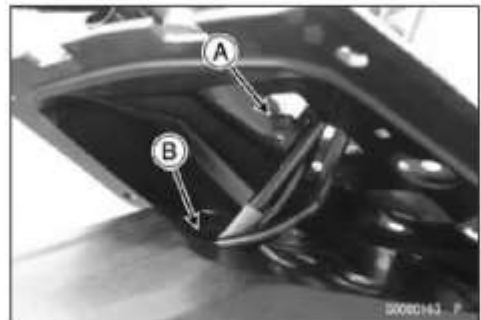


- Remove:
Screws [A]
Flap Assembly



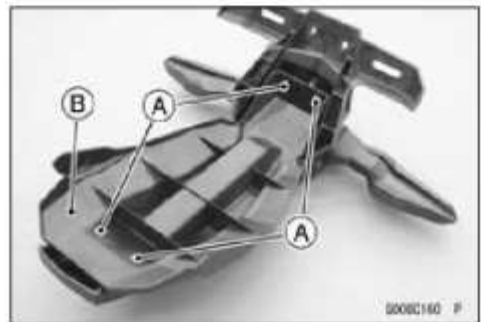
Flap Installation

- Installation is the reverse of removal.
- Fit the hook [A] of the rear fender to the hole [B] of the flap.
- Apply a non-permanent locking agent to the flap mounting bolts.
- Tighten:
Torque - Flap Mounting Bolts: 7.0 N·m (0.71 kgf·m, 62 in·lb)



Flap Disassembly

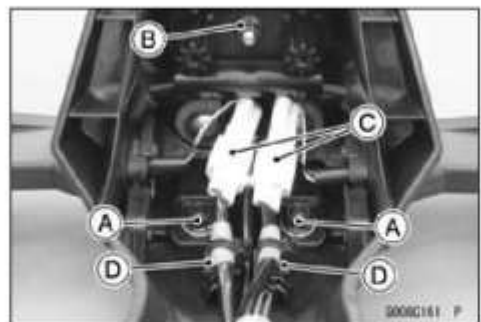
- Remove:
Flap Assembly (see Flap Removal(15-28))
Screws [A]
Cover [B]



- Remove:
Nuts [A] and Washers
Collars and Bolts
Reflector Nut [B] and Reflector
- Disconnect:
Rear Turn Signal Light Lead Connectors [C]

NOTE

○The clip of the clamps [D] cannot reuse. Do not remove the clip if it is not necessary.



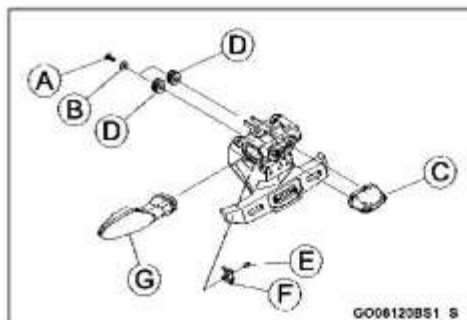
15-30 FRAME

Fenders

- Remove:
 - Bolts [A] and Washers (Both Sides)
 - Bracket [B]
 - Flap

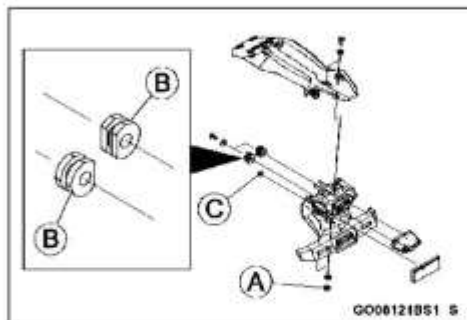


- Remove:
 - Screws [A] and Washers [B]
 - License Plate Light [C]
 - Dampers [D]
 - Screw [E] (Both Sides)
 - Washer [F] (Both Sides)
 - Rear Turn Signal Light [G] (Both Sides)



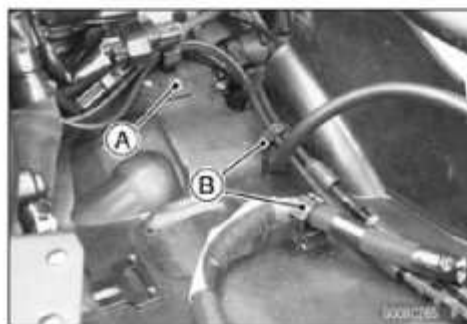
Flap Assembly

- Assembly is the reverse of disassembly.
- Replace the nuts [A] with new ones.
- Install the dampers [B] as shown.
- Tighten:
 - Torque - Reflector Nut [C]: 3.4 N·m (0.35 kgf-m, 30 in-lb)

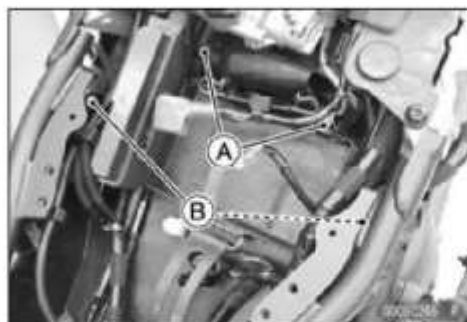


Rear Fender Removal

- Remove:
 - Flap Assembly (see Flap Removal(15-28))
 - Fuel Tank (see Fuel Tank Removal(3-75))
 - Battery (see Battery Removal(16-28))
 - Bolt [A]
- Open the clamps [B].

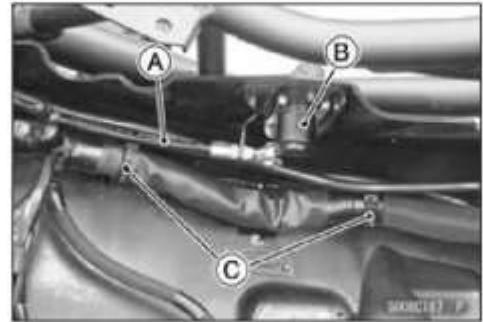


- Open the clamps [A].
- Remove:
 - Bolts [B]



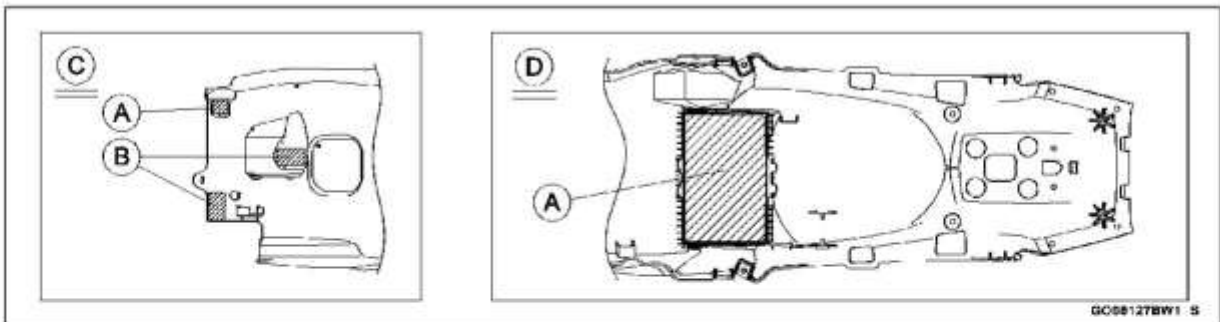
Fenders

- Free the seat lock cable [A] from the seat lock [B].
- Cut the bands [C].
- Remove:
Rear Fender

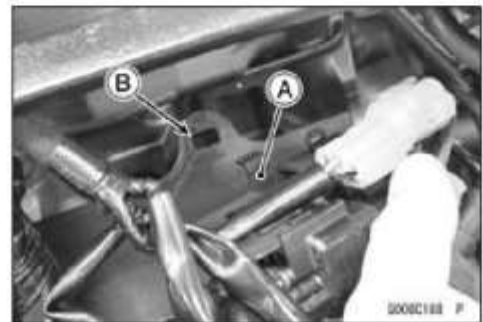


Rear Fender Installation

- When installing the pads and dampers, position them as shown.
Pads [A]
Dampers [B]
Back Side of Rear Fender [C]
Upper Side of Rear Fender [D]



- Install the rear fender.
- Installation is the reverse of removal. Note the followings.
- Hook the claw of the connector bracket [A] to the hole [B] of the rear fender.
- Run the leads correctly (see Cable, Wire, and Hose Routing section (18-2)).



15-32 FRAME

Frame

Frame Inspection

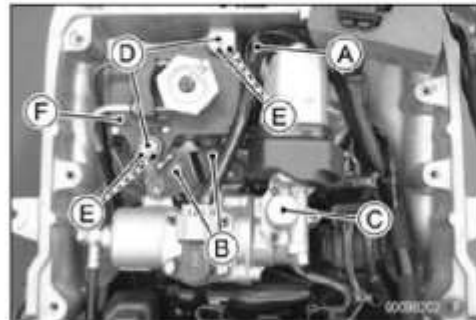
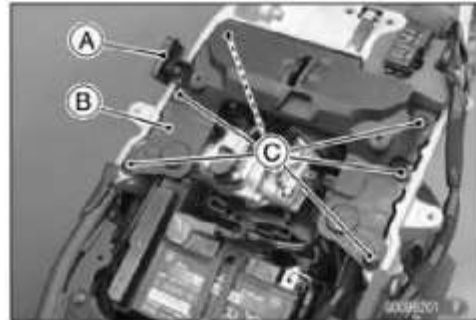
- Visually inspect the frame for cracks, dents, bending, or warp.
- ★ If there is any damage to the frame, replace it.

 **WARNING**

A repaired frame may fail in use, possibly causing an accident resulting in injury or death. If the frame is bent, dented, cracked, or warped, replace it.

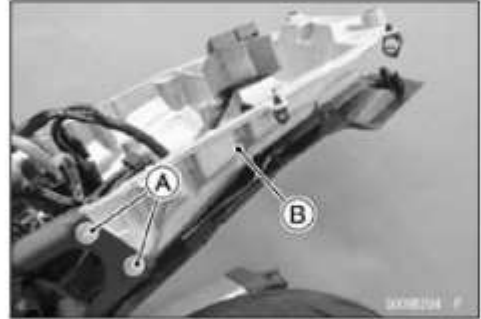
Rear Frame Removal

- Remove:
Flap (see Flap Removal(15-28))
- Free the fuse box [A] from the seat lock bracket [B].
- Remove:
Bolts [C]
Seat Lock Bracket
- Open the clamps [A].
- Remove:
Bolts [B]
Rear Shock Absorber Preload Actuator [C]
Bolts [D]
Clamp
Washers [E]
Exhaust Butterfly Valve Actuator [F]
- Cut the band [A].
- Open the clamp [B].



Frame

- Remove:
 - Rear Frame Bolts [A] (Both Sides)
 - Rear Frame [B]



Rear Frame Installation

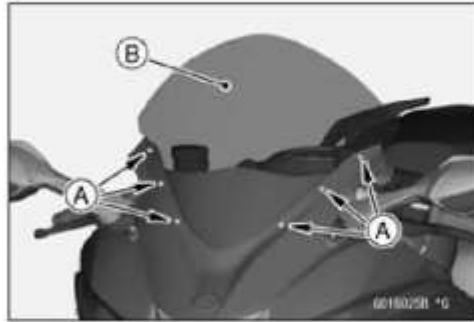
- Install the rear frame.
 - Installation is the reverse of removal. Note the followings.
 - Apply a non-permanent locking agent to the rear frame bolts.
 - Tighten:
 - Tighten the upper bolt first.
- Torque - Rear Frame Bolts: 27 N·m (2.8 kgf·m, 20 ft·lb)**
- Run the leads correctly (see Cable, Wire, and Hose Routing section (18-2)).

15-34 FRAME

Windshield

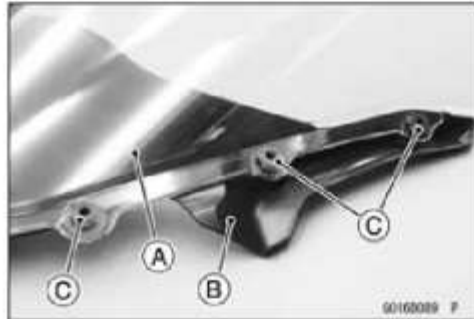
Windshield Removal

- Remove the bolts [A] and washers.
- Remove the windshield [B] upward.



Windshield Installation

- Install:
 - Windshield [A]
 - Cover [B]
 - Wellnuts [C] (Both Sides)

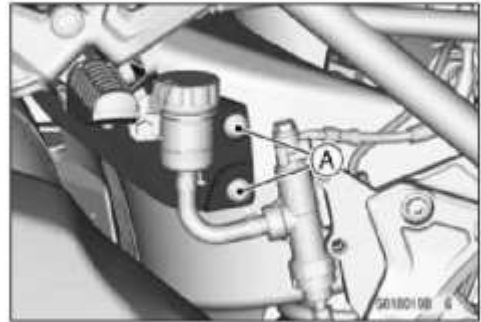


- Install the windshield.
- Install the washers and tighten the bolts.

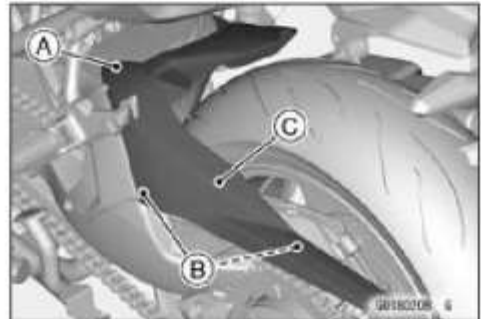
Guard

Mud Guard Removal

- Remove:
 - Heel Guard (see [Rear Master Cylinder Removal\(12-19\)](#))
 - Bolts [A] and Washers

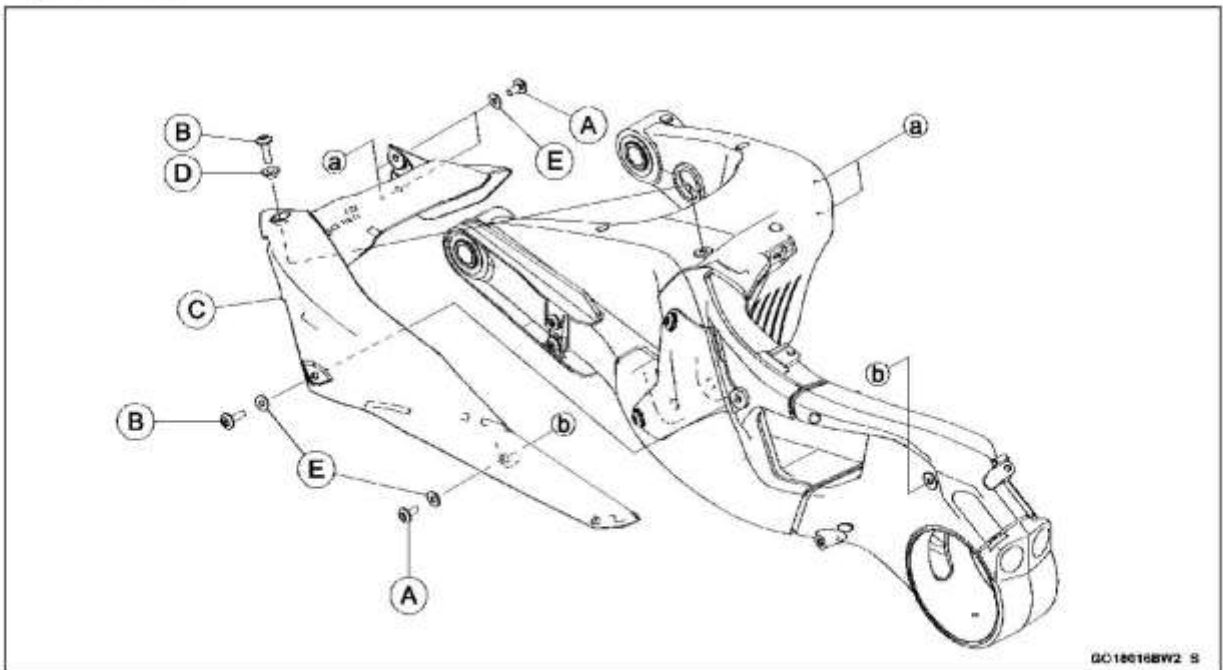


- Remove:
 - Bolt [A] and Collar
 - Bolts [B] and Washers
 - Mud Guard [C]



Mud Guard Installation

- Apply a non-permanent locking agent to the following bolts.
 - L = 14 mm [A]
 - L = 22 mm [B]
- Install:
 - Mud Guard [C]
 - Collar [D]
 - Washers [E]
- The flange side faces to the bolt.
- Tighten the bolts.
- Install the heel guard (see [Rear Master Cylinder Installation\(12-19\)](#)).

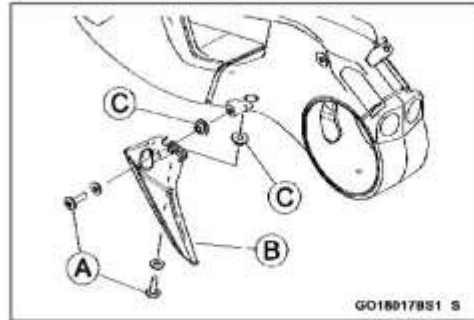


15-36 FRAME

Guard

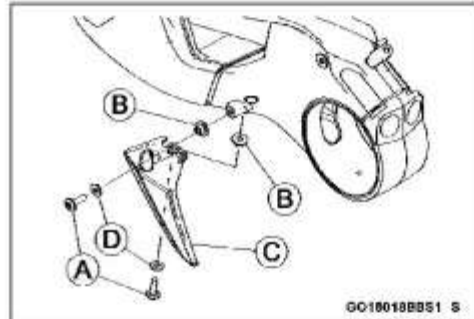
Rear Sprocket Guard Removal

- Remove:
 - Bolts [A] and Washers
 - Rear Sprocket Guard [B]
 - Collars [C]



Rear Sprocket Guard Installation

- Apply a non-permanent locking agent to the bolts [A].
- Install the collars [B].
- The flange side faces to the swingarm.
- Install:
 - Rear Sprocket Guard [C]
 - Washers [D]
- Tighten the bolts.



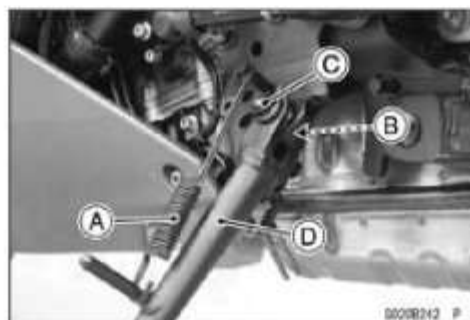
Side Stand, Center Stand

Side Stand Removal

- Raise the rear wheel off the ground with the stand.
- Remove the side stand switch bolt [A] and the nut to free the side stand switch [B].



- Remove:
 - Spring [A]
 - Cotter Pin [B]
 - Side Stand Bolt [C]
 - Collar
 - Washer
 - Side Stand [D]

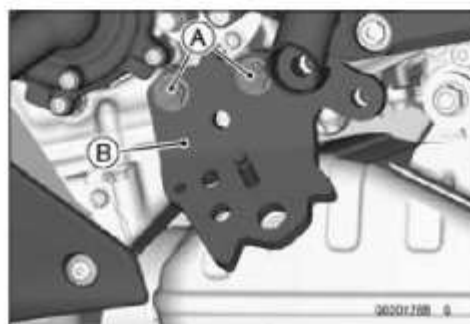


- ★ If the side stand bracket removal is necessary, follow the below procedures.

- Loosen:
 - Swingarm Mounting Plate Nut (Upper) (see [Swingarm Removal\(13-30\)](#))
 - Swingarm Pivot Shaft Nut (see [Swingarm Removal\(13-30\)](#))
- Remove the shift lever bolt [A].
- Take the shift lever [B] off the shift shaft.



- Remove:
 - Left Center Stand Bracket (see [Center Stand Removal\(15-39\)](#))
 - Side Stand Bracket Bolts [A]
 - Side Stand Bracket [B]



15-38 FRAME

Side Stand, Center Stand

Side Stand Installation

- When installing the side stand bracket, replace the center stand bracket nut and side stand bracket nut [A] with new ones.
- Apply a non-permanent locking agent to the side stand bracket bolts [B].
- Apply a non-permanent locking agent to the center stand bracket bolt [C].
- Install the side stand bracket and center stand bracket to the engine and frame.
- Install the center stand (see Center Stand Installation(15-40))
- Tighten:

Torque - Side Stand Bracket Bolts: 50 N·m (5.1 kgf·m, 37 ft·lb)

Side Stand Bracket Bolt (Rear) [D]: 50 N·m (5.1 kgf·m, 37 ft·lb)

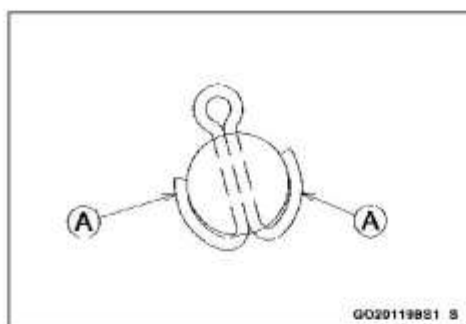
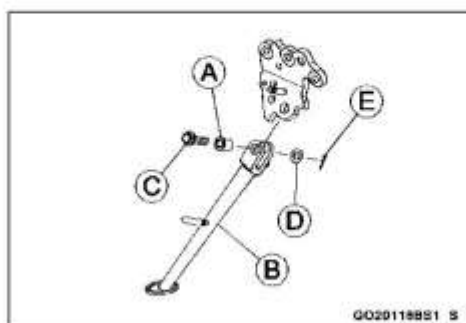
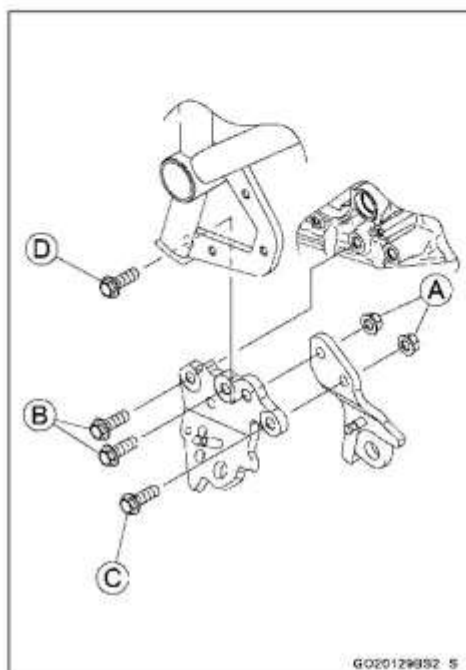
Center Stand Bracket Bolt: 50 N·m (5.1 kgf·m, 37 ft·lb)

Swingarm Pivot Shaft Nut: 110 N·m (11.2 kgf·m, 81.1 ft·lb)

Swingarm Mounting Plate Nut (Upper): 45 N·m (4.6 kgf·m, 33 ft·lb)

- Apply grease to the outside of the collar [A] and the sliding surface of the side stand [B].
- Install:
 - Side Stand
 - Collar
 - Side Stand Bolt [C]
 - Washer [D]
- Replace the cotter pin [E] with a new one.

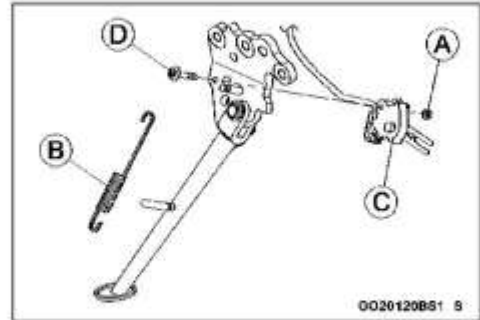
- Install the cotter pin and bend the pin ends [A].



Side Stand, Center Stand

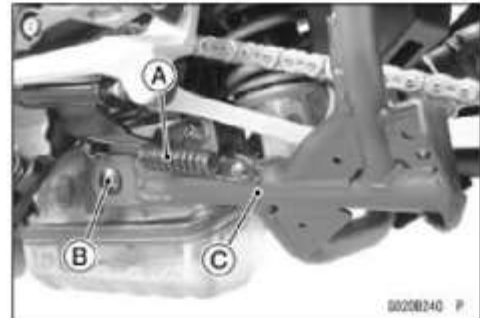
- Replace the side stand switch nut [A] with a new one.
- Install the spring [B].
- Face the spring ends as shown.
- Install the side stand switch [C].
- Run the side stand switch lead and quick shifter sensor lead correctly (see Cable, Wire, and Hose Routing section (18-2)).
- Tighten the side stand switch bolt [D] while steadying the nut.

Torque - Side Stand Switch Bolt: 9.0 N·m (0.92 kgf·m, 80 in·lb)

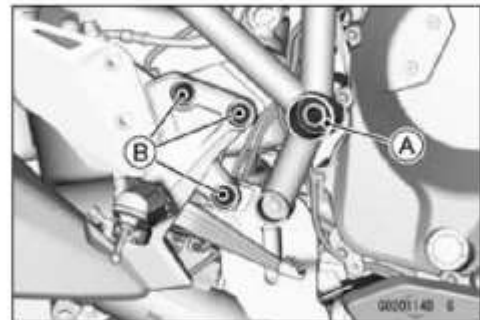


Center Stand Removal

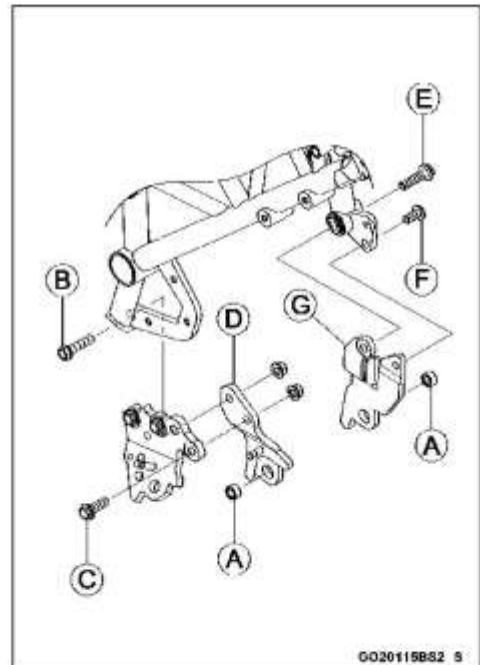
- Remove:
 - Spring [A]
 - Center Stand Bolt [B] and Nut (Both Sides)
 - Center Stand [C]



- Loosen:
 - Swingarm Pivot Shaft Nut [A]
- Remove:
 - Right Front Footpeg Bracket Bolts [B]



- Remove:
 - Collars [A]
 - Side Stand Bracket Bolt [B] and Nut
 - Center Stand Bracket Bolt (L = 30 mm) [C] and Nut
 - Center Stand Bracket (Left) [D]
 - Swingarm Mounting Plate Bolt (Lower) [E]
 - Center Stand Bracket Bolt (L = 20 mm) [F]
 - Center Stand Bracket (Right) [G]

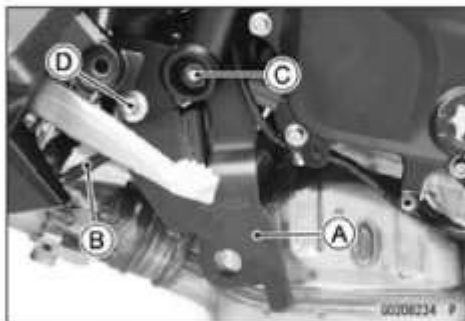


15-40 FRAME

Side Stand, Center Stand

Center Stand Installation

- Install:
 - Center Stand Bracket (Right) [A]
- Run the cruise control cancel switch lead [B] to the inside of the center stand bracket.
- Tighten the following bolts temporarily.
 - Swingarm Mounting Plate Bolt (Lower) [C]
 - Center Stand Bracket Bolt (L = 20 mm) [D]



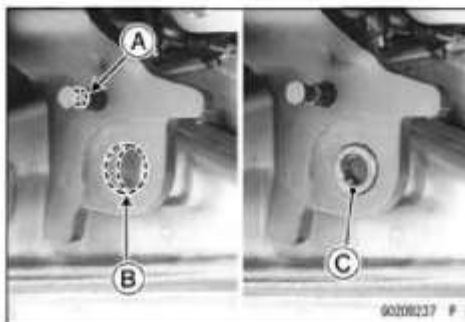
- Replace the side stand bracket nut and the center stand bracket nut with new ones.
- Apply a non-permanent locking agent to the center stand bracket bolt (L = 30 mm) [A].
- Install:
 - Center Stand Bracket (Left) [B]
- Tighten the following bolts and nuts temporarily.
 - Side Stand Bracket Bolt [C] and Nut
 - Center Stand Bracket Bolt and Nut



- Apply plenty of grease to the following portion.
 - Sliding Surface [A] of Center Stand (Both Sides)



- Apply plenty of grease to the following portions.
 - Spring Mounting Pin [A]
 - Collar Mounting Portion [B] of Center Stand Bracket (Both Sides)
- Install:
 - Collar [C] (Both Sides)

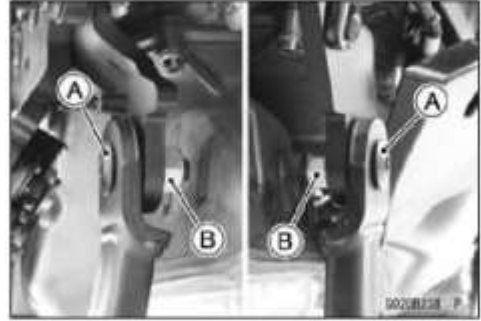


- Tighten:
 - Torque - Swingarm Pivot Shaft Nut [A]: 110 N·m (11.2 kgf·m, 81 ft·lb)



Side Stand, Center Stand

- Tighten the bolts [A] while steadying the nuts [B].
Torque - Center Stand Bolts: 45 N·m (4.6 kgf·m, 33 ft·lb)



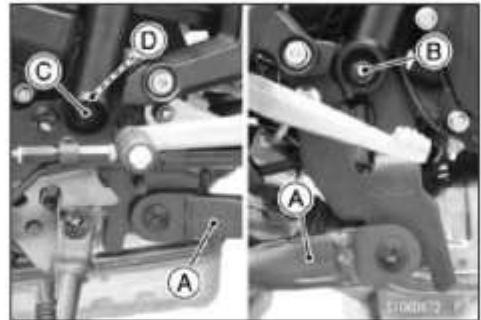
- Tighten:
Torque - Center Stand Bracket Bolt [A]: 50 N·m (5.1 kgf·m, 37 ft·lb)
Front Footpeg Bracket Bolts [B]: 25 N·m (2.5 kgf·m, 18 ft·lb)

○ Tighten the bolt while steadying the nut [C].

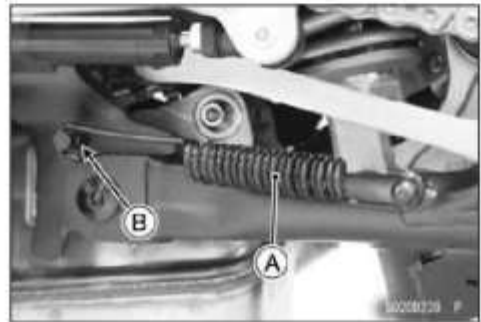


- Tighten the bolts while lifting the center stand [A].
Torque - Swingarm Mounting Plate Bolt (Lower) [B]: 45 N·m (4.6 kgf·m, 33 ft·lb)
Side Stand Bracket Bolt [C]: 50 N·m (5.1 kgf·m, 37 ft·lb)

○ Tighten the bolt while steadying the nut [D].



- Install the spring [A].
○ The spring direction is as shown.
○ Be sure the spring end is in the groove [B] of mounting pin.

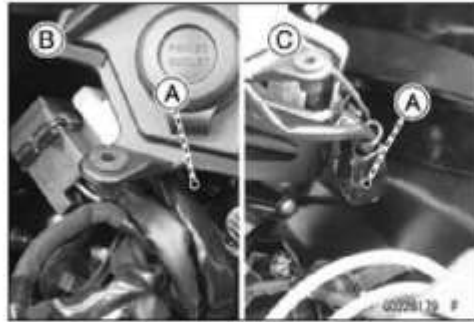


15-42 FRAME

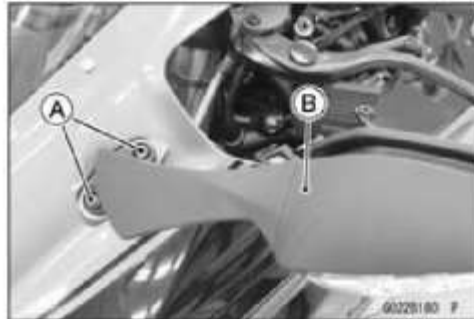
Rear View Mirrors

Rear View Mirror Removal

- Remove:
 - Upper Inner Fairings (see [Upper Inner Fairing Removal\(15-18\)](#))
- Disconnect the front turn signal light lead connectors [A].
 - Left Side [B]
 - Right Side [C]



- Remove:
 - Rear View Mirror Mounting Bolts [A]
 - Rear View Mirror [B]



Rear View Mirror Installation

- Be sure to fit the holes [A] of the upper fairing to the bosses of the meter bracket.
- Apply a non-permanent locking agent to the rear view mirror mounting bolts.
- Install the rear view mirror.
- Run the front turn signal light lead through the hole [B].
- Tighten:
 - Torque - Rear View Mirror Mounting Bolts: 8.0 N·m (0.82 kgf·m, 71 in·lb)**
- Run the front turn signal light lead correctly (see [Cable, Wire, and Hose Routing section \(18-2\)](#)).
- Install the removed parts.

